

Juvenile Complaints and Offenses, FY 2014*

Offense Category	Felony Juvenile Intake Complaints	Misdemeanor Juvenile Intake Complaints	Total Juvenile Intake Complaints	New Probation Case Offenses	Commitment Offenses
Delinquent					
Abusive Language	N/A	0.4%	0.3%	0.0%	0.0%
Alcohol	N/A	12.5%	8.0%	11.0%	0.0%
Arson	3.6%	1.2%	1.5%	0.0%	0.0%
Assault	15.5%	20.6%	16.5%	13.4%	0.0%
Burglary	25.0%	N/A	5.4%	6.1%	0.0%
Disorderly Conduct	N/A	5.6%	3.6%	3.7%	0.0%
Escape	0.0%	0.0%	0.0%	0.0%	33.3%
Extortion	0.0%	0.4%	0.3%	1.2%	0.0%
Family	0.0%	0.8%	0.5%	2.4%	0.0%
Fraud	3.6%	0.4%	1.0%	0.0%	0.0%
Gangs	4.8%	0.0%	1.0%	2.4%	0.0%
Kidnapping	0.0%	0.0%	0.0%	0.0%	0.0%
Larceny	31.0%	20.2%	19.5%	26.8%	33.3%
Murder	0.0%	N/A	0.0%	0.0%	0.0%
Narcotics	0.0%	7.3%	4.6%	3.7%	0.0%
Obscenity	1.2%	1.2%	1.0%	1.2%	0.0%
Obstr. of Justice	0.0%	5.6%	3.6%	4.9%	0.0%
Robbery	2.4%	N/A	0.5%	0.0%	0.0%
Sexual Abuse	1.2%	0.0%	0.3%	0.0%	0.0%
Sexual Offense	0.0%	0.0%	0.0%	0.0%	0.0%
Trespassing	0.0%	3.6%	2.3%	2.4%	0.0%
Vandalism	9.5%	8.9%	7.7%	13.4%	0.0%
Weapons	1.2%	2.4%	1.8%	1.2%	0.0%
Misc./Other	1.2%	5.2%	3.9%	0.0%	0.0%
Technical					
Contempt of Court	N/A	N/A	1.3%	1.2%	0.0%
Failure to Appear	N/A	N/A	0.3%	0.0%	0.0%
Parole Violation	N/A	N/A	0.0%	0.0%	0.0%
Probation Violation	N/A	N/A	2.8%	3.7%	33.3%
Traffic					
Traffic	0.0%	3.6%	3.6%	1.2%	0.0%
Status/Other					
Civil Commitment	N/A	N/A	0.0%	0.0%	N/A
CHINS	N/A	N/A	1.8%	0.0%	N/A
CHINSup	N/A	N/A	6.4%	0.0%	N/A
Other	N/A	N/A	0.5%	0.0%	N/A
Total Offenses	84	248	389	82	3

* Total juvenile intake complaints include felonies, misdemeanors, and other offenses; therefore, the sum of felony and misdemeanor offenses may not add to the total. Traffic offenses may be delinquent or non-delinquent, but all are captured under "Traffic."

* New probation case offense data are not comparable to reports prior to FY 2013 due to the inclusion of amended offenses.

* Commitments are not comparable to previous reports because subsequent commitments are excluded.

Juvenile Cases by Most Serious Offense, FY 2014*

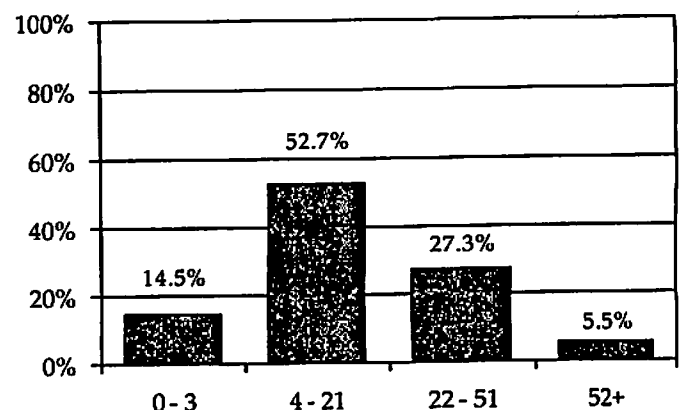
Offense Severity	Juvenile Intake Cases	New Probation Cases	Commitments
DAI Ranking			
Felony			
Against Persons	6.3%	10.0%	0.0%
Weapons/Narcotics	0.4%	0.0%	0.0%
Other	13.3%	25.0%	100.0%
Class 1 Misdemeanor			
Against Persons	19.2%	15.0%	0.0%
Other	37.6%	50.0%	0.0%
Prob./Parole Violation	4.1%	0.0%	0.0%
Court Order Violation	1.1%	0.0%	0.0%
Status Offense	11.8%	0.0%	0.0%
Other	6.3%	0.0%	0.0%
Missing	0.0%	0.0%	0.0%
VCSC Ranking			
Person	25.5%	25.0%	0.0%
Property	30.3%	45.0%	100.0%
Narcotics	5.2%	5.0%	0.0%
Other	39.1%	25.0%	0.0%
Missing	0.0%	0.0%	0.0%
Total Juvenile Cases	271	20	1

* New probation case offense data are not comparable to reports prior to FY 2013 due to the inclusion of amended offenses.

* Commitments are not comparable to previous reports because subsequent commitments are excluded.

» 81.5% of juvenile intake cases were detention-eligible. There were 53 pre-D statuses for a rate of 4.2 eligible intakes per pre-D detention status.

Pre-D Detention LOS Distribution (Days), FY 2014 Releases*



* Individual FIPS data may not add to the statewide total due to detentions with missing ICNs which indicate the detaining FIPS.

Individual FIPS probation placements may not add to the CSU or statewide totals if cases were open in multiple FIPS. Commitment data may not match the statewide report by CSU due to different dates of data download.



FIPS 660

City of Harrisonburg

District 26

Intake Complaints, FY 2012-2014

DR/CW Complaints	2012	2013	2014
Custody	378	381	290
Support/Desertion	80	66	88
Protective Order	105	99	83
Visitation	221	209	203
Total DR/CW Complaints	784	755	664
Juvenile Complaints			
Felony	61	145	84
Class 1 Misdemeanor	179	168	224
Class 2-4 Misdemeanor	14	36	25
CHINS/CHINSup	30	23	34
Other			
TDO	0	0	0
Technical Violation	48	43	17
Traffic	3	1	3
Other	4	3	2
Total Juvenile Complaints	339	419	389
Total Complaints	1,123	1,174	1,053

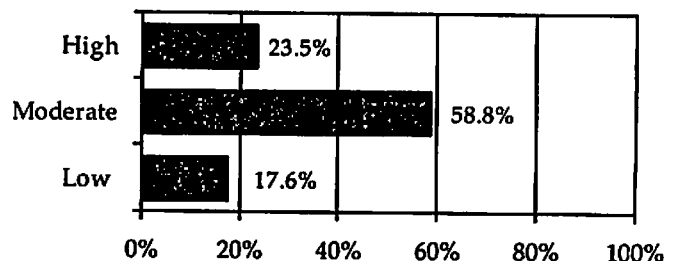
Juvenile Intake Case Demographics, FY 2012-2014

Demographics	2012*	2013*	2014
Race			
Black	13.3%	14.5%	12.2%
White	72.3%	68.8%	76.8%
Asian	0.0%	0.4%	0.0%
Other/Unknown	14.5%	16.4%	11.1%
Ethnicity			
Hispanic	36.3%	23.0%	34.3%
Non-Hispanic	24.2%	17.5%	14.4%
Unknown/Missing	39.5%	59.5%	51.3%
Sex			
Male	66.0%	65.8%	72.7%
Female	34.0%	34.2%	27.3%
Age			
8-12	7.8%	8.2%	8.1%
13	6.3%	6.7%	13.7%
14	12.9%	10.0%	18.1%
15	14.8%	14.9%	15.9%
16	25.8%	17.5%	23.2%
17	25.8%	37.5%	19.6%
18-20	5.9%	5.2%	1.1%
Missing	0.8%	0.0%	0.4%
Total Juvenile Intake Cases	256	269	271

Juvenile Intake Dispositions, FY 2014

Intake Disposition*	2014
Petitions	
Petition Filed	50.6%
Unsuccessful Diversion with Petition	1.0%
Detention Order with Petition	23.9%
Detention Order Only	0.5%
Resolved	0.5%
Diverted	
Open Diversion	0.3%
Successful Diversion	8.0%
Unsuccessful Diversion with No Petition	0.3%
Other	14.9%
Total Juvenile Complaints	389

Completed Initial YASI Risk Assessments, FY 2014*



* Data may include multiple initial assessments for a juvenile if completed on different days. Due to data entry issues, YASI risk assessment data may be incomplete. Individual FIPS data may not add to the statewide total due to risk assessments without a known FIPS.

» 17 initial YASI risk assessments were completed.

Workload Information, FY 2014*

Completed Reports	Count	Activity	ADP
Pre-D Reports	3	Probation	26
Post-D Reports	28	Intensive Prob.	0
Transfer Reports	1	Parole	1
Custody Investigations	0	Direct Care	2

* Data are not comparable to previous reports because adult cases are excluded.

Placements, Releases, and LOS, FY 2014

	Probation	Parole
Placements	20	2
Releases	26	1
Average LOS (Days)	480	206



Individual FIPS probation placements may not add to the CSU or statewide totals if cases were open in multiple FIPS.

Juvenile Complaints and Offenses, FY 2014*

Offense Category	Felony Juvenile Intake Complaints	Misdemeanor Juvenile Intake Complaints	Total Juvenile Intake Complaints	New Probation Case Offenses	Commitment Offenses
Delinquent					
Abusive Language	N/A	0.0%	0.0%	1.4%	N/A
Alcohol	N/A	16.9%	7.1%	4.2%	N/A
Arson	1.7%	1.7%	1.1%	1.4%	N/A
Assault	5.1%	11.9%	6.1%	19.7%	N/A
Burglary	13.6%	N/A	2.9%	7.0%	N/A
Disorderly Conduct	N/A	5.9%	2.5%	1.4%	N/A
Escape	0.0%	0.0%	0.0%	0.0%	N/A
Extortion	0.0%	0.8%	0.4%	0.0%	N/A
Family	0.0%	0.0%	0.0%	0.0%	N/A
Fraud	5.1%	0.0%	1.1%	1.4%	N/A
Gangs	0.0%	0.0%	0.0%	0.0%	N/A
Kidnapping	0.0%	0.0%	0.0%	0.0%	N/A
Larceny	27.1%	8.5%	9.3%	19.7%	N/A
Murder	0.0%	N/A	0.0%	0.0%	N/A
Narcotics	10.2%	10.2%	6.4%	5.6%	N/A
Obscenity	0.0%	0.8%	0.4%	0.0%	N/A
Obstr. of Justice	0.0%	2.5%	1.1%	1.4%	N/A
Robbery	0.0%	N/A	0.0%	0.0%	N/A
Sexual Abuse	20.3%	0.8%	4.6%	9.9%	N/A
Sexual Offense	0.0%	0.0%	0.0%	0.0%	N/A
Trespassing	0.0%	0.0%	0.0%	5.6%	N/A
Vandalism	11.9%	12.7%	7.9%	8.5%	N/A
Weapons	0.0%	4.2%	1.8%	2.8%	N/A
Misc./Other	0.0%	12.7%	6.8%	0.0%	N/A
Technical					
Contempt of Court	N/A	N/A	3.2%	4.2%	N/A
Failure to Appear	N/A	N/A	0.0%	0.0%	N/A
Parole Violation	N/A	N/A	0.0%	0.0%	N/A
Probation Violation	N/A	N/A	8.2%	1.4%	N/A
Traffic					
Traffic	5.1%	10.2%	9.3%	4.2%	N/A
Status/Other					
Civil Commitment	N/A	N/A	0.0%	0.0%	N/A
CHINS	N/A	N/A	6.4%	0.0%	N/A
CHINSup	N/A	N/A	12.9%	0.0%	N/A
Other	N/A	N/A	0.7%	0.0%	N/A
Total Offenses	59	118	280	71	0

* Total juvenile intake complaints include felonies, misdemeanors, and other offenses; therefore, the sum of felony and misdemeanor offenses may not add to the total. Traffic offenses may be delinquent or non-delinquent, but all are captured under "Traffic."

* New probation case offense data are not comparable to reports prior to FY 2013 due to the inclusion of amended offenses.

* Commitments are not comparable to previous reports because subsequent commitments are excluded.

Juvenile Cases by Most Serious Offense, FY 2014*

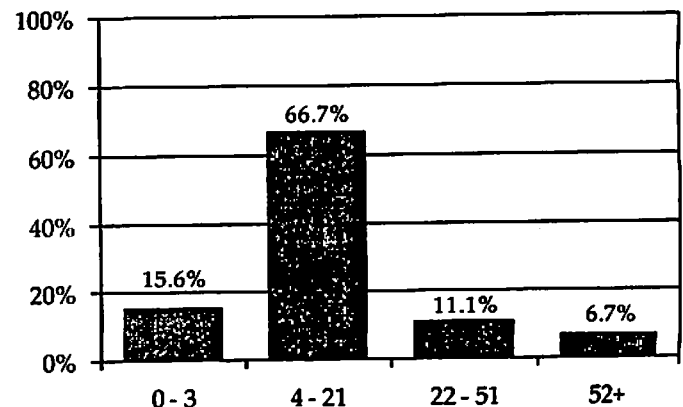
Offense Severity	Juvenile Intake Cases	New Probation Cases	Commitments
DAI Ranking			
Felony			
Against Persons	6.2%	16.7%	N/A
Weapons/Narcotics	1.0%	8.3%	N/A
Other	10.0%	25.0%	N/A
Class 1 Misdemeanor			
Against Persons	8.6%	33.3%	N/A
Other	22.9%	8.3%	N/A
Prob./Parole Violation	11.0%	0.0%	N/A
Court Order Violation	3.8%	8.3%	N/A
Status Offense	25.2%	0.0%	N/A
Other	11.4%	0.0%	N/A
Missing	0.0%	0.0%	N/A
VCSC Ranking			
Person	14.3%	50.0%	N/A
Property	18.1%	41.7%	N/A
Narcotics	7.1%	0.0%	N/A
Other	60.5%	8.3%	N/A
Missing	0.0%	0.0%	N/A
Total Juvenile Cases	210	12	0

* New probation case offense data are not comparable to reports prior to FY 2013 due to the inclusion of amended offenses.

* Commitments are not comparable to previous reports because subsequent commitments are excluded.

» 61.9% of juvenile intake cases were detention-eligible. There were 45 pre-D statuses for a rate of 2.9 eligible intakes per pre-D detention status.

Pre-D Detention LOS Distribution (Days), FY 2014 Releases*



* Individual FIPS data may not add to the statewide total due to detentions with missing ICNs which indicate the detaining FIPS.

Individual FIPS probation placements may not add to the CSU or statewide totals if cases were open in multiple FIPS. Commitment data may not match the statewide report by CSU due to different dates of data download.



FIPS 165

Rockingham County

District 26

Intake Complaints, FY 2012-2014

DR/CW Complaints	2012	2013	2014
Custody	448	470	508
Support/Desertion	149	125	136
Protective Order	131	139	129
Visitation	320	309	359
Total DR/CW Complaints	1,048	1,043	1,132
Juvenile Complaints			
Felony	68	86	59
Class 1 Misdemeanor	162	145	99
Class 2-4 Misdemeanor	27	59	19
CHINS/CHINSup	31	37	56
Other			
TDO	0	0	0
Technical Violation	23	23	34
Traffic	0	0	2
Other	7	10	11
Total Juvenile Complaints	318	360	280
Total Complaints	1,366	1,403	1,412

Juvenile Intake Dispositions, FY 2014

Intake Disposition	2014
Petitions	
Petition Filed	50.7%
Unsuccessful Diversion with Petition	2.5%
Detention Order with Petition	30.7%
Detention Order Only	0.7%
Resolved	0.0%
Diverted	
Open Diversion	0.0%
Successful Diversion	7.5%
Unsuccessful Diversion with No Petition	0.0%
Other	7.9%
Total Juvenile Complaints	280

Workload Information, FY 2014*

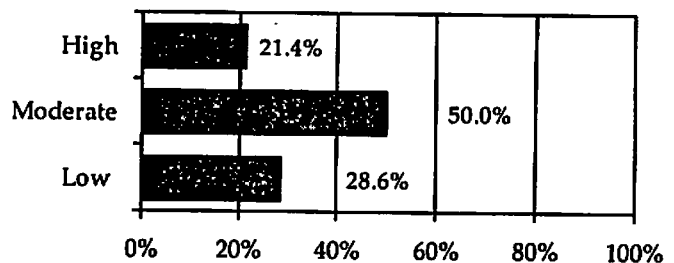
Completed Reports	Count	Activity	ADP
Pre-D Reports	0	Probation	26
Post-D Reports	0	Intensive Prob.	0
Transfer Reports	0	Parole	0
Custody Investigations	0	Direct Care	1

* Data are not comparable to previous reports because adult cases are excluded.

Juvenile Intake Case Demographics, FY 2012-2014

Demographics	2012	2013	2014
Race			
Black	4.1%	4.0%	4.3%
White	87.8%	82.3%	87.6%
Asian	0.0%	0.4%	0.0%
Other/Unknown	8.1%	13.3%	8.1%
Ethnicity			
Hispanic	8.1%	10.6%	6.2%
Non-Hispanic	45.0%	12.4%	11.9%
Unknown/Missing	46.8%	77.0%	81.9%
Sex			
Male	68.9%	65.9%	75.2%
Female	31.1%	34.1%	24.8%
Age			
8-12	9.0%	2.7%	5.2%
13	9.5%	10.2%	3.8%
14	13.1%	8.8%	11.4%
15	17.1%	18.1%	13.3%
16	23.0%	18.6%	27.6%
17	21.2%	38.5%	31.4%
18-20	6.3%	2.2%	4.8%
Missing	0.9%	0.9%	2.4%
Total Juvenile Intake Cases	222	226	210

Completed Initial YASI Risk Assessments, FY 2014*



* Data may include multiple initial assessments for a juvenile if completed on different days. Due to data entry issues, YASI risk assessment data may be incomplete. Individual FIPS data may not add to the statewide total due to risk assessments without a known FIPS.

» 14 initial YASI risk assessments were completed.

Placements, Releases, and LOS, FY 2014

	Probation	Parole
Placements	12	0
Releases	32	1
Average LOS (Days)	430	247

